



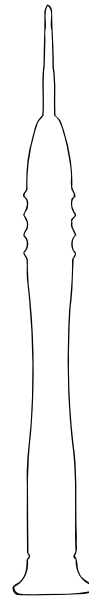
SWITCH JOY-CON REPLACEMENT TOOL SET

Quickstart Guide

Checking the supplied items

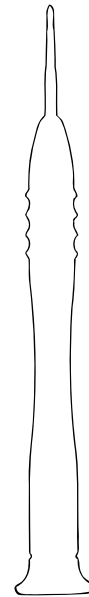


Joy-Con Joystick Replacement x2
Y00 Screws x4



1.5 mm

Phillips #00
Screwdriver x1

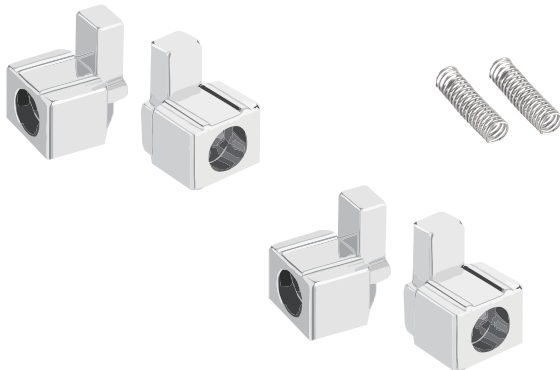


2.0 mm

Tri-point Y00
Screwdriver x1



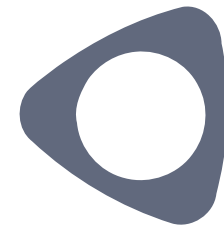
Spudger x1



Alloy Buckle Lock x4 with 2 springs



Tweezers x1



Opening Picks x1

Notes on using your tools:

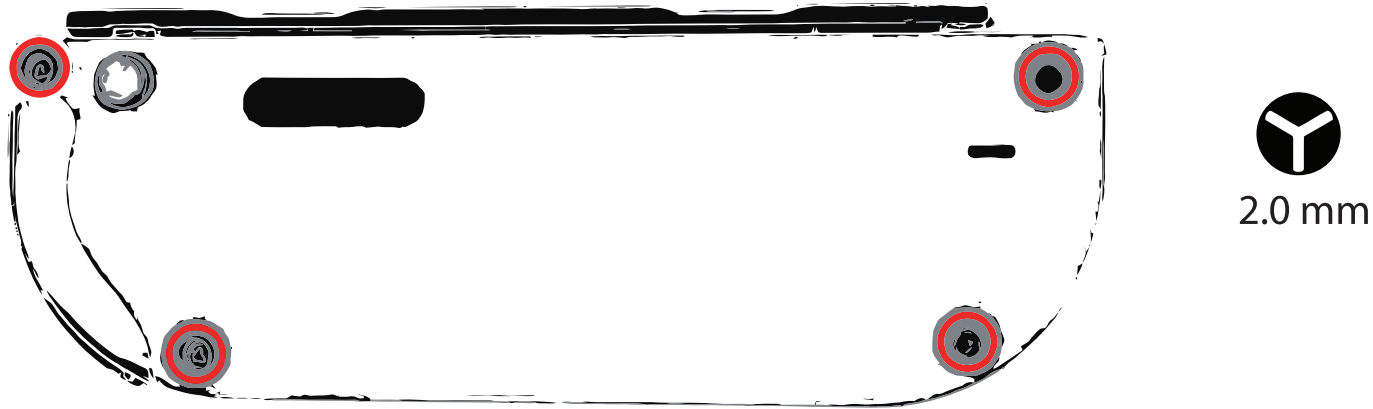
Thank you for purchasing the HYZ® Switch Joy-con Replacement Tool set.

This guide will teach you step-by-step instructions to replace the joystick and buckle lock of a Joy-con. In this guide, the Joy-con(R) will be shown but the process is almost the same as the left one.

Make sure that you have turned off your console to ensure there are no accidental connections.

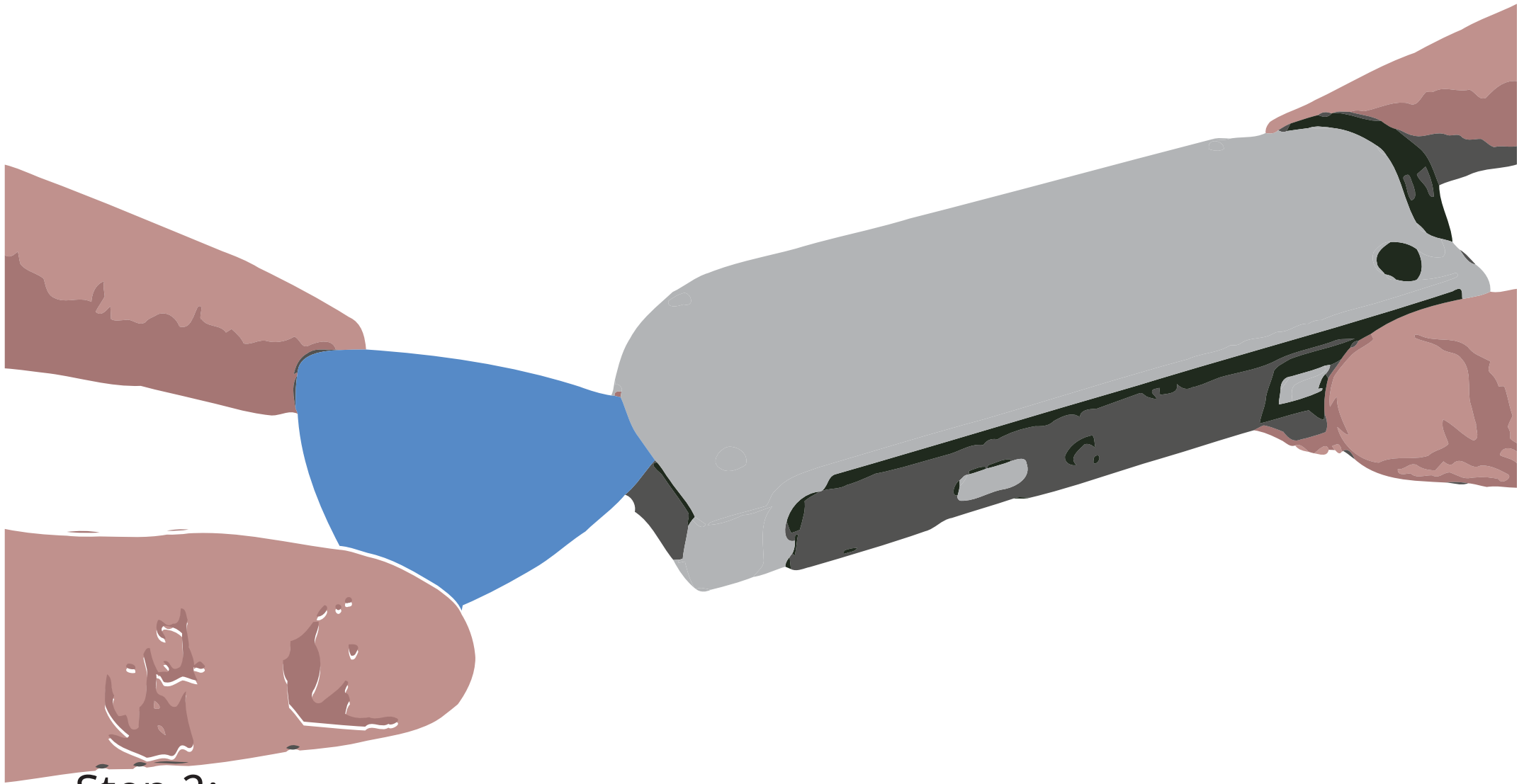
if you need any help or have any problems with your product. just send message to support@hyzgames.com, We are committed to giving you the best customer experience.

Joystick Replacement Guide



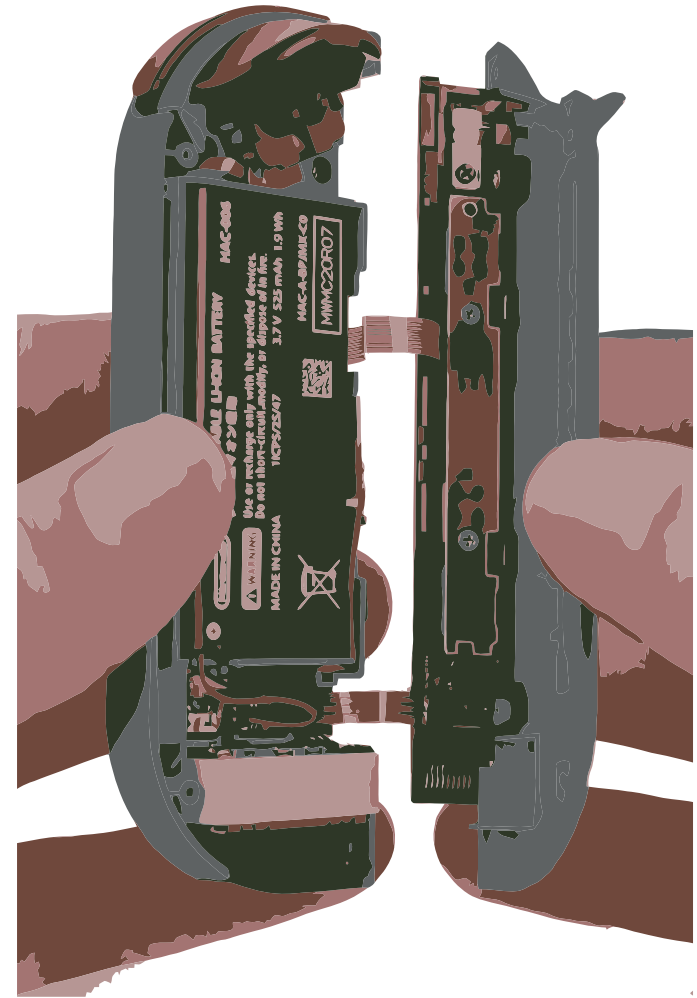
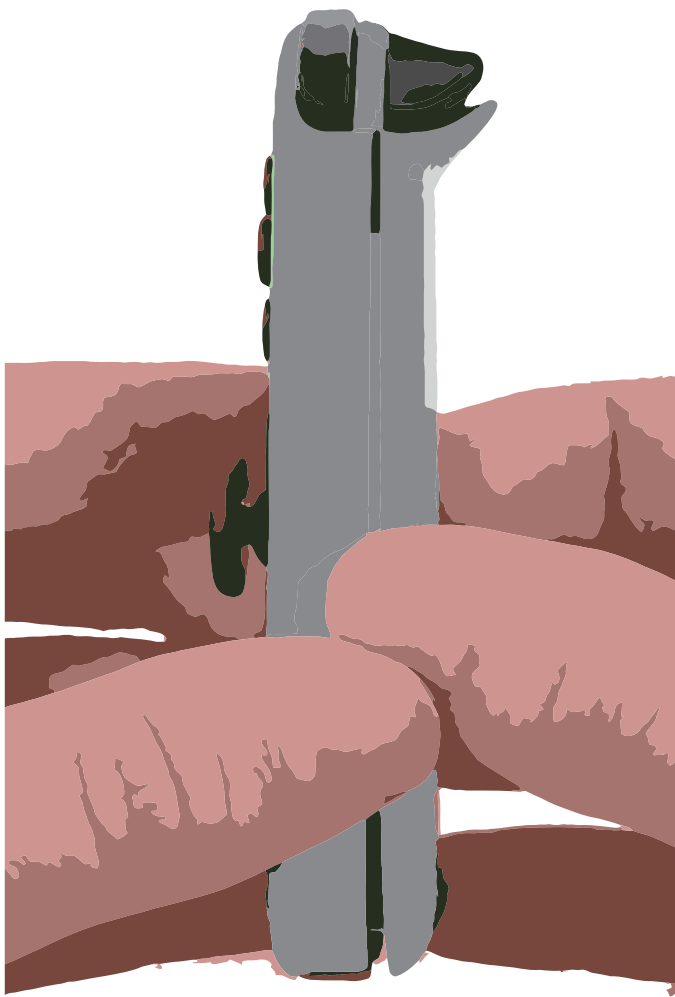
Step 1:

Remove the four tri-point Y00 screws from the back panel of the Joy-Con. Please follow the picture's red circle to remove it.



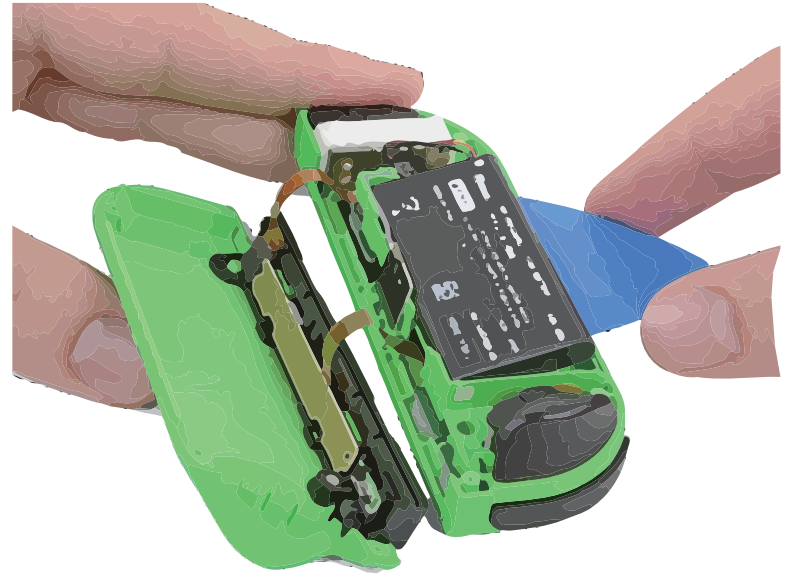
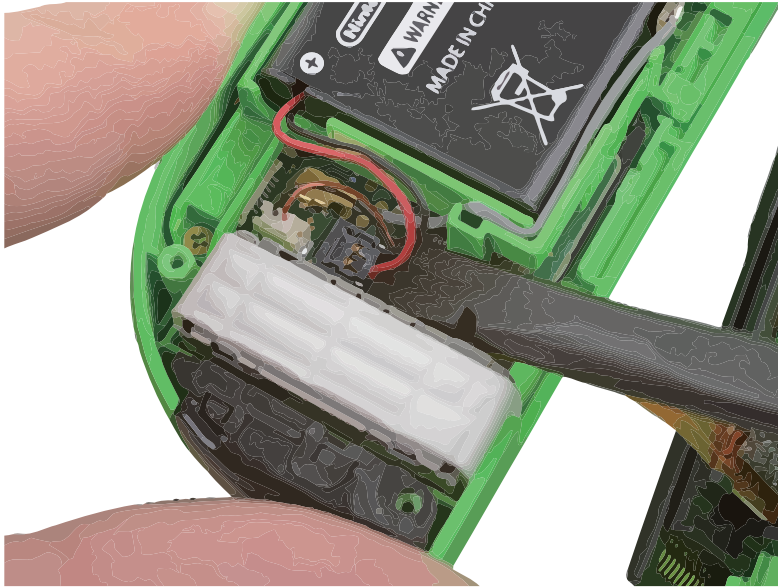
Step 2:

Insert an opening pick under the lower side of the back panel,
Slide the flat edge of an opening pick up the side of the Joy-Con.



Step 3:

Open the the Joy-Con like a book, with the charging rail facing away from you.



Step 4:

Use a spudger to gently pry the battery connector from its socket on the motherboard. removal the battery and the coaxial antenna cable from the midframe.

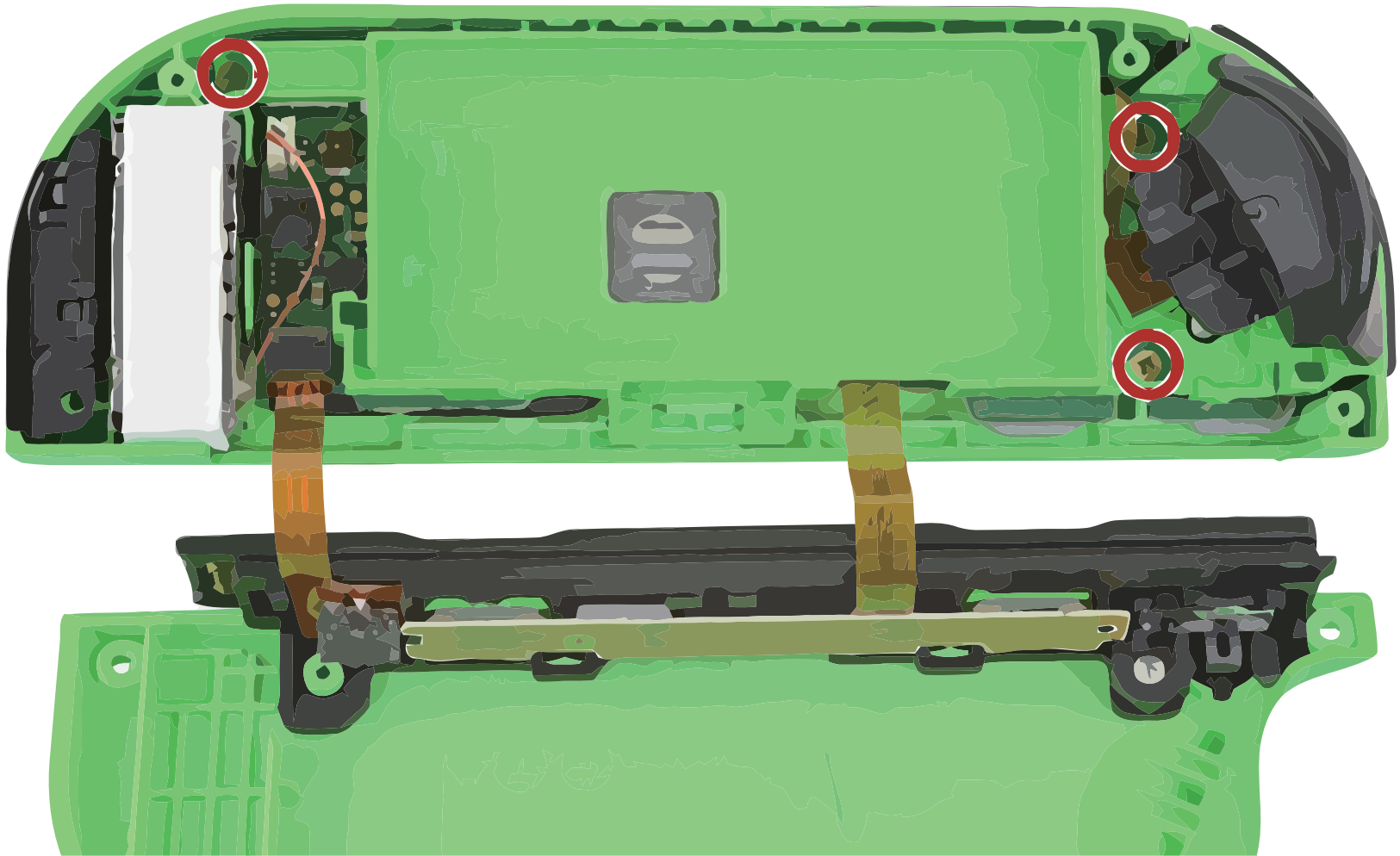
Don't try to fully remove the back panel yet. There are still two cables connecting the charging rail to the motherboard.



Step 5:

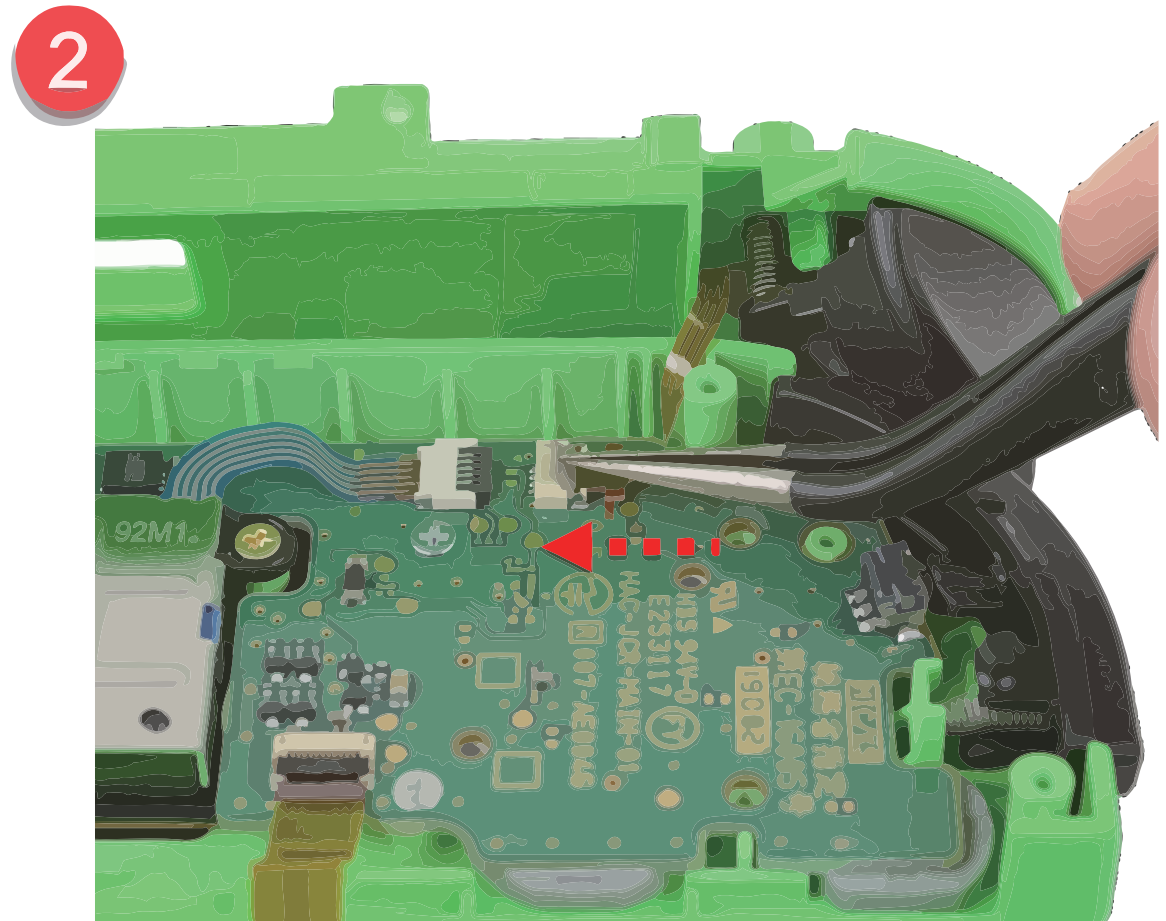
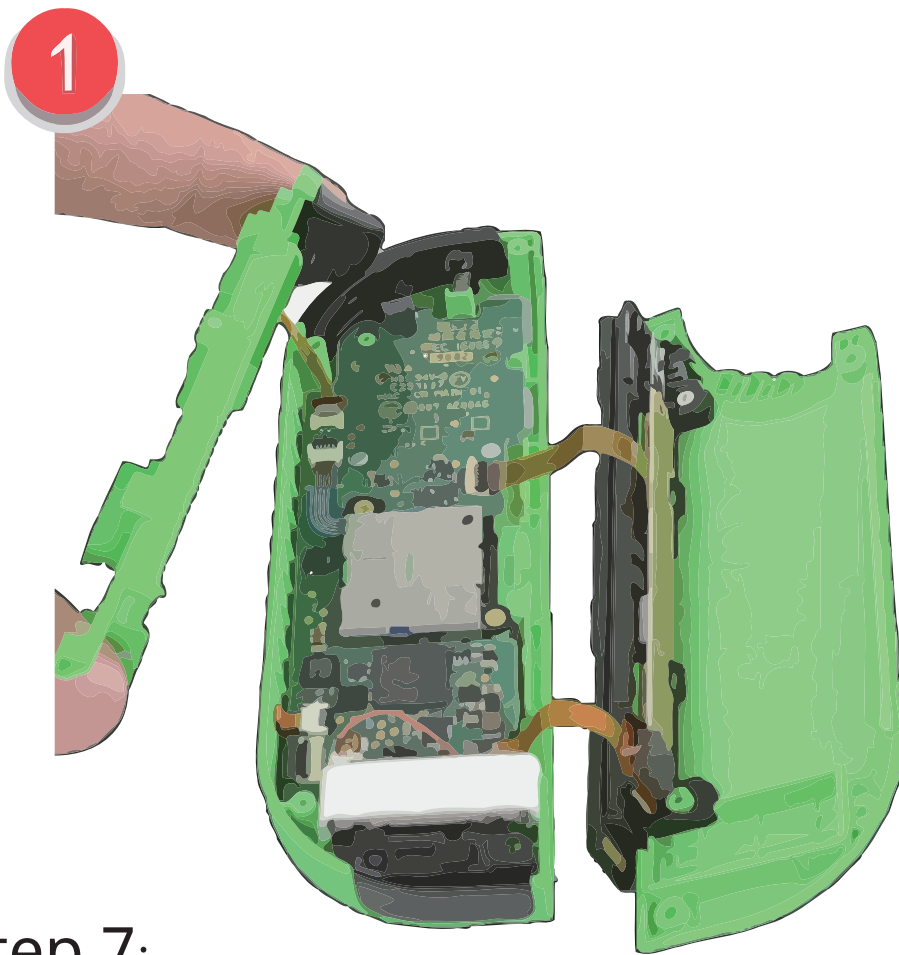
Pry up with the pointy end of a spudger to disconnect the antenna cable's coaxial connector from the motherboard and remove the grey antenna cable.


1.5 mm



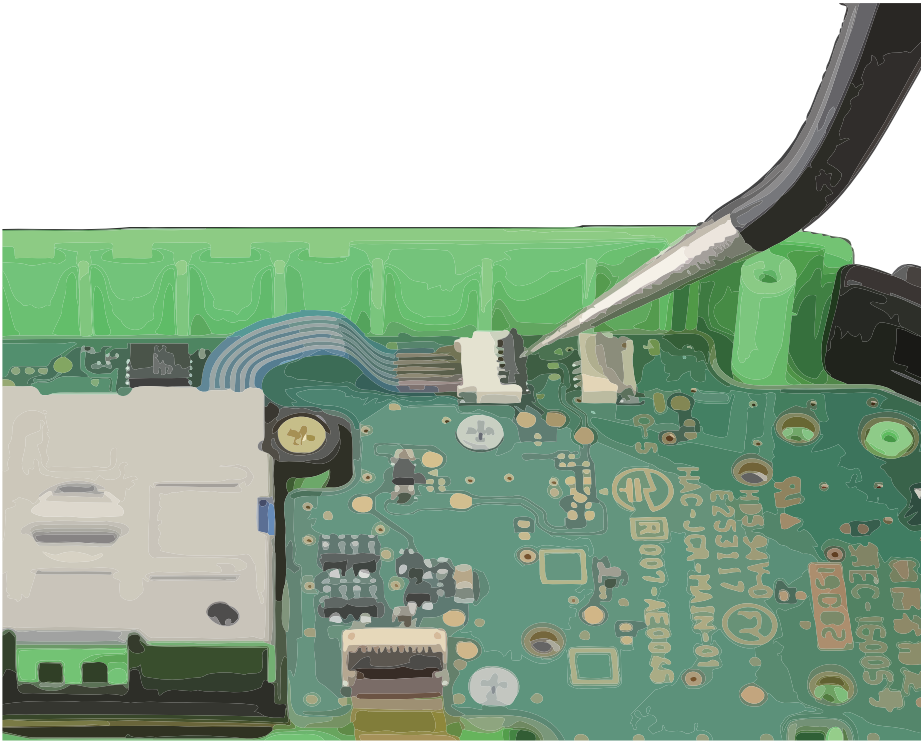
Step 6:

Remove the three 3.5 mm Phillips #00 screws on midframe.



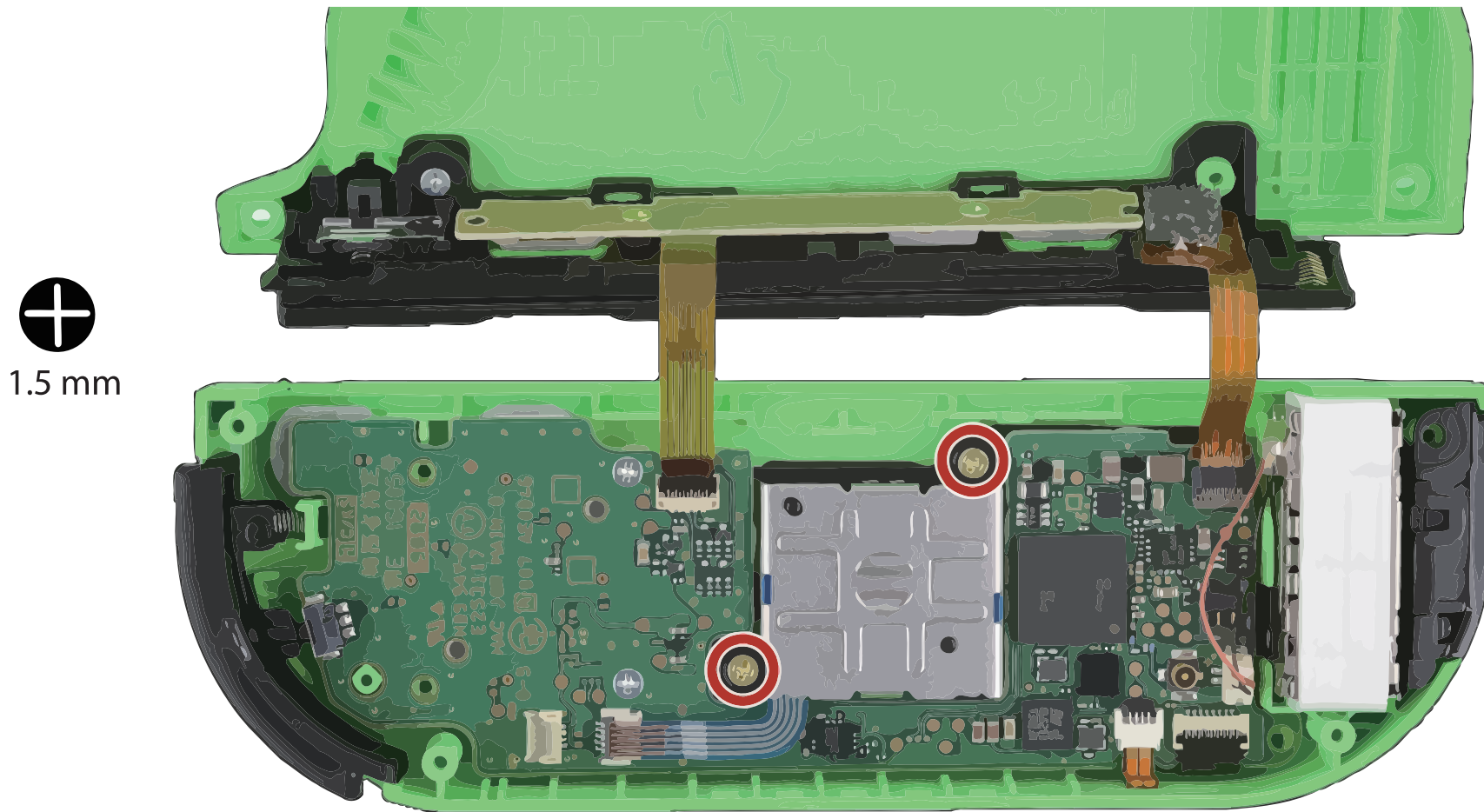
Step 7:

1. Carefully flip the midframe over and away from the motherboard.
2. The ZR button cable is locked in place by a small ZIF connector on the motherboard. Towards the red arrow, use tweezers or a spudger to flip up the ZIF connector lock. Then, use tweezers to gently pull the ZR button flex cable out of the ZIF connector socket. The midframe is now disconnected and can be removed.



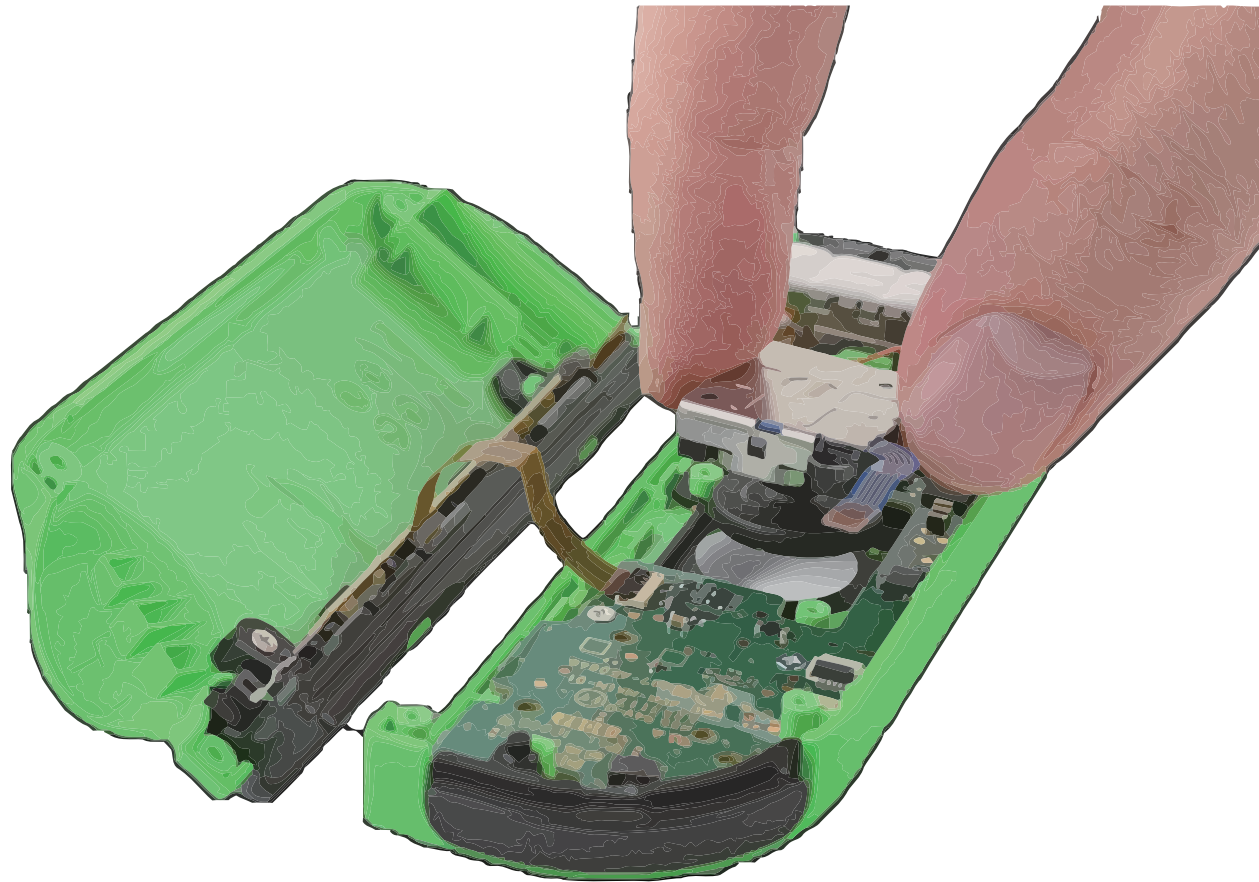
Step 8:

The joystick cable is also locked into place by a ZIF connector. Use tweezers or a spudger to flip the ZIF lock upward and carefully disconnect the cable.



Step 9:

Remove the two 3.5 mm Phillips #00 screws from the joystick.



Step 10:

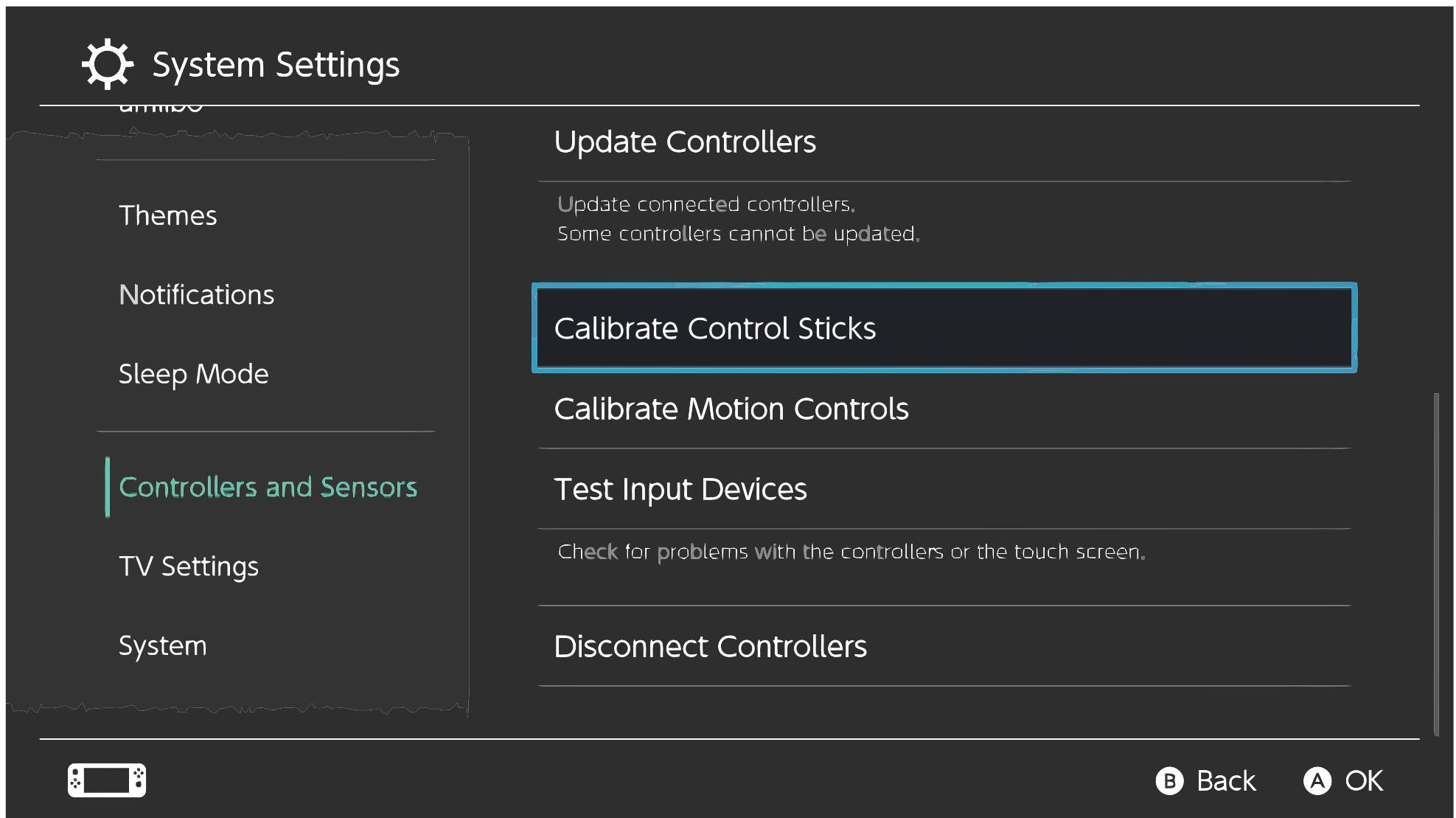
Carefully remove the joystick from its housing.

There is a thin black gasket around the hole where the joystick pokes through the Joy-Con. Do your best not to disturb this gasket as you remove the joystick!



Step 11:

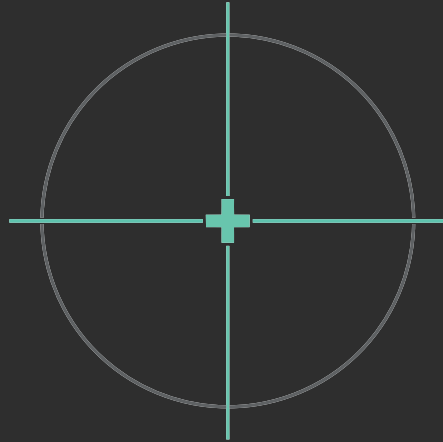
Replace original joystick with replacement, then repeat the above steps in reverse way to complete the installation.



Step 12:

Go to System Settings->Controllers and Sensors->Calibrate Control Sticks to calibrate your replacement stick.

Calibrate Control Sticks



Check the following:

- 1 + is shown instead of ● when the stick is not being touched.
- 2 Turn the stick and check that the circle color changes.

Press ⊗ to recalibrate if the stick is not working as expected.



Back to Default Settings



Calibrate

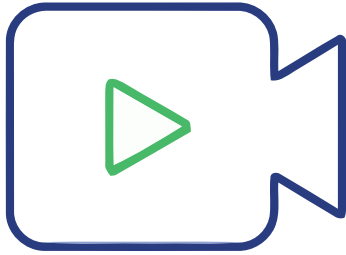


Back

Step 13:

Congratulations, you have completed the final step. When you finish the calibration, the stick will be in the center.

More info



To Watch Video Guide
or more info, Just scan
the QR Code



WARNING

IMPORTANT SAFETY INSTRUCTIONS

- SAVE THESE INSTRUCTIONS DANGER TO REDUCE THE RISK OF FIRE OR ELECTRIC SHOCK, CAREFULLY FOLLOW THESE INSTRUCTIONS
- MAKE SURE THAT YOU HAVE TURNED OFF YOUR CONSOLE TO ENSURE THERE ARE NO ACCIDENTAL CONNECTIONS.
- WE ARE NOT LIABLE FOR DAMAGE TO THE MACHINE CAUSED BY FAILURE TO FOLLOW THE INSTRUCTIONS IN THE MANUAL.

Table of contents

Before use

Notes on using your tools3

Checking the supplied items4

Instructions for use

Joystick Replacement Guide5-18

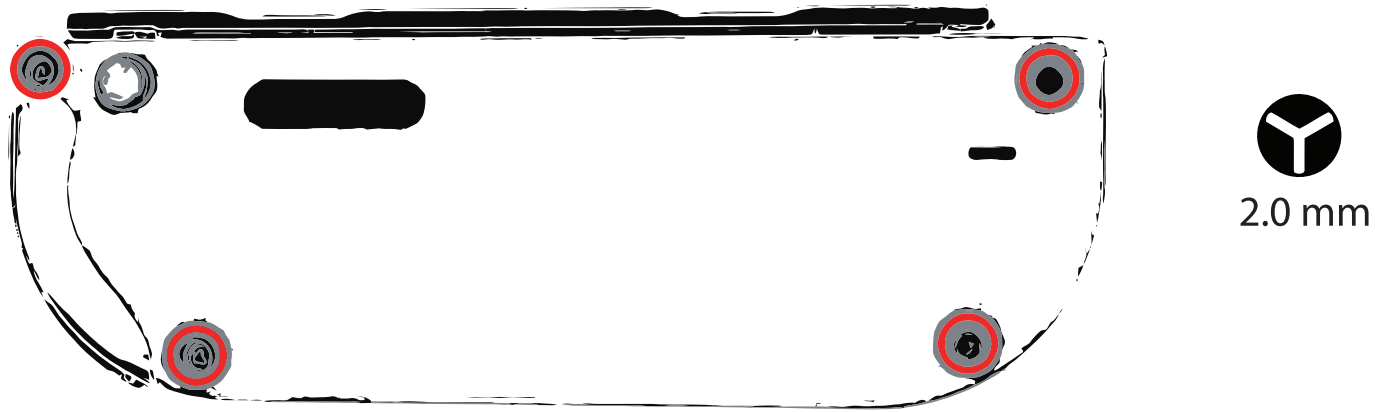
Buckle Lock Replacement Guide19-26

Support and help

Contact and get help27-28



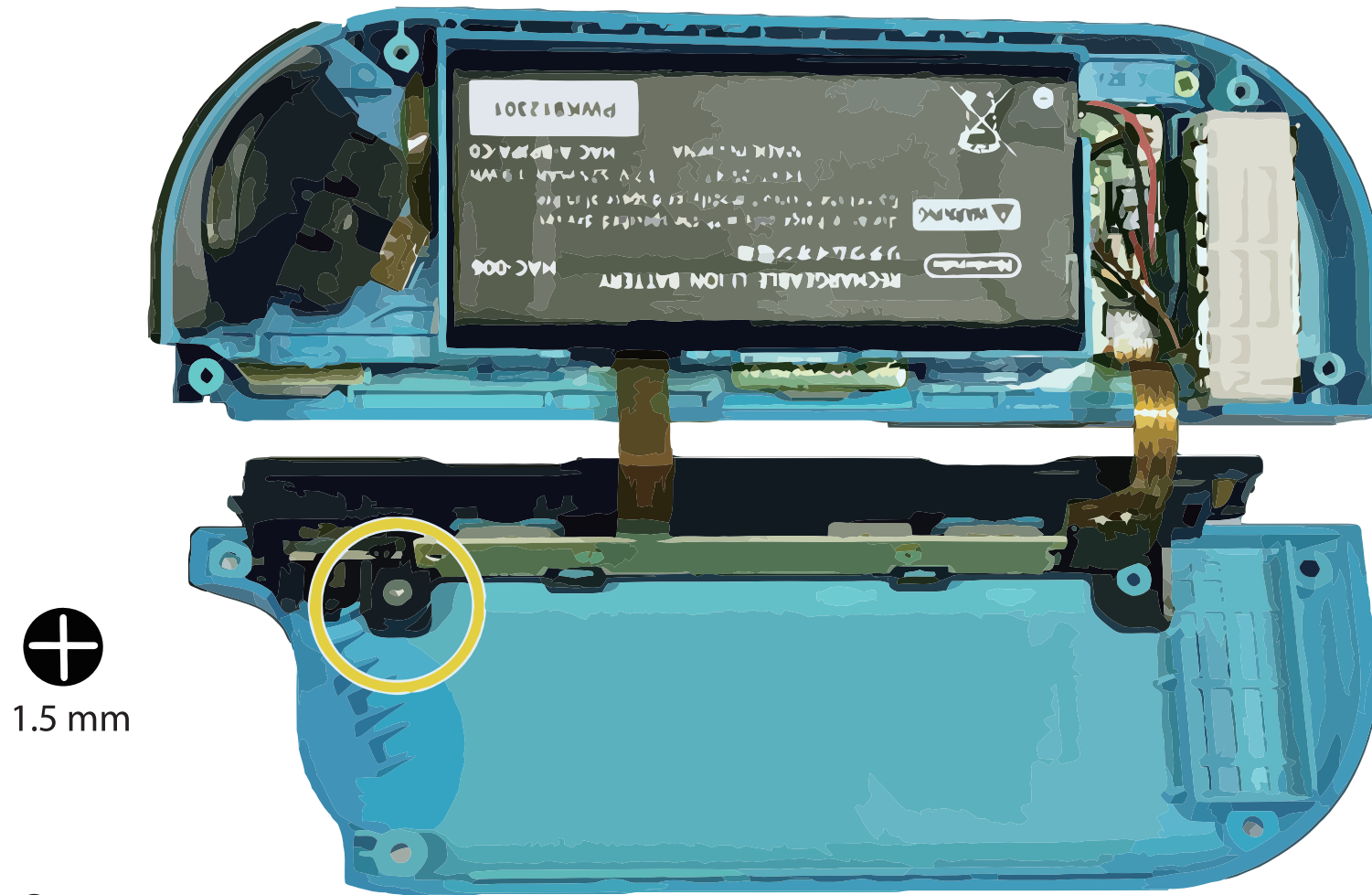
© 2019 HYZ Technology Ltd. All rights reserved. HYZ, the HYZ logo are trademarks or registered trademarks of HYZ Technology Ltd in the U.S. and/or other countries. The Nintendo Switch* word mark and logos are owned by Nintendo SI G, Inc. and any use of such marks by HYZ Technology Ltd is under license. All other trademarks are property of the ir respective owners. Specifications are subject to change without notice.



Step 1:

Remove the four tri-point Y00 screws from the back panel of the Joy-Con. Please follow the picture's red circle to remove it.

Carefully separate the two halves of the Joy-Con. Be gentle—there are ribbon cables connecting them inside.

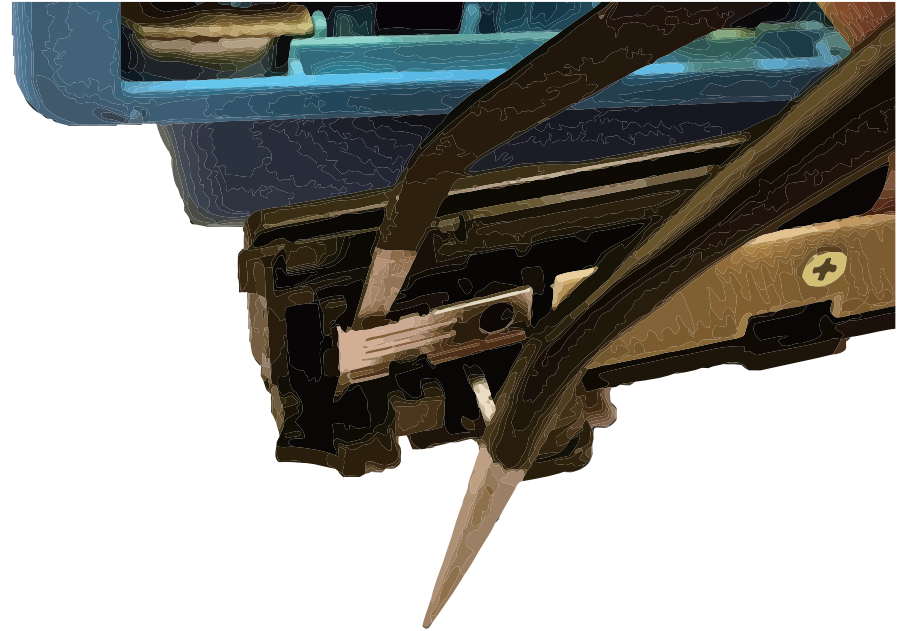
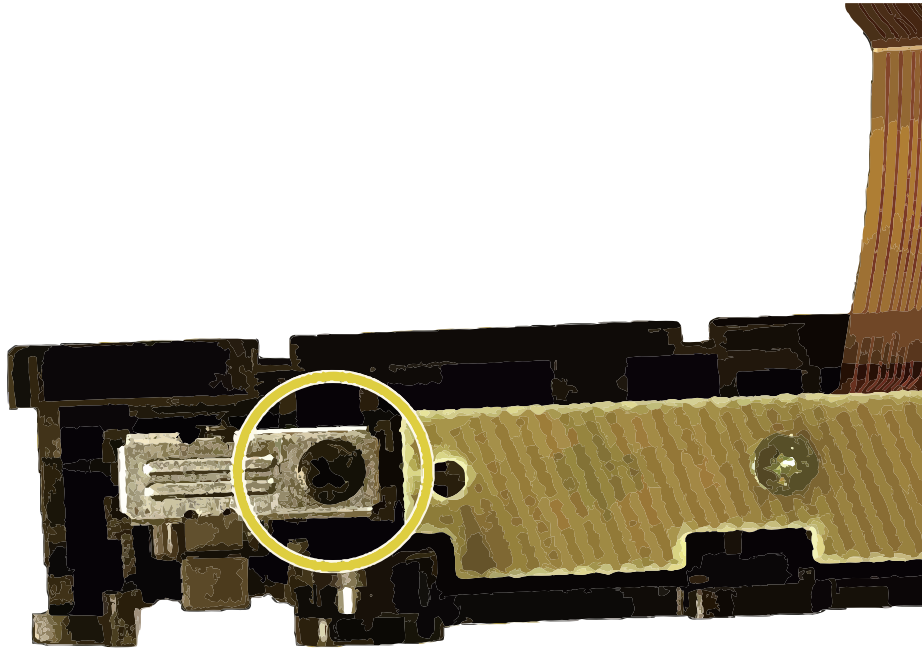


Step 2:

Remove the single #00 Phillips screw holding the black plastic shell in place.

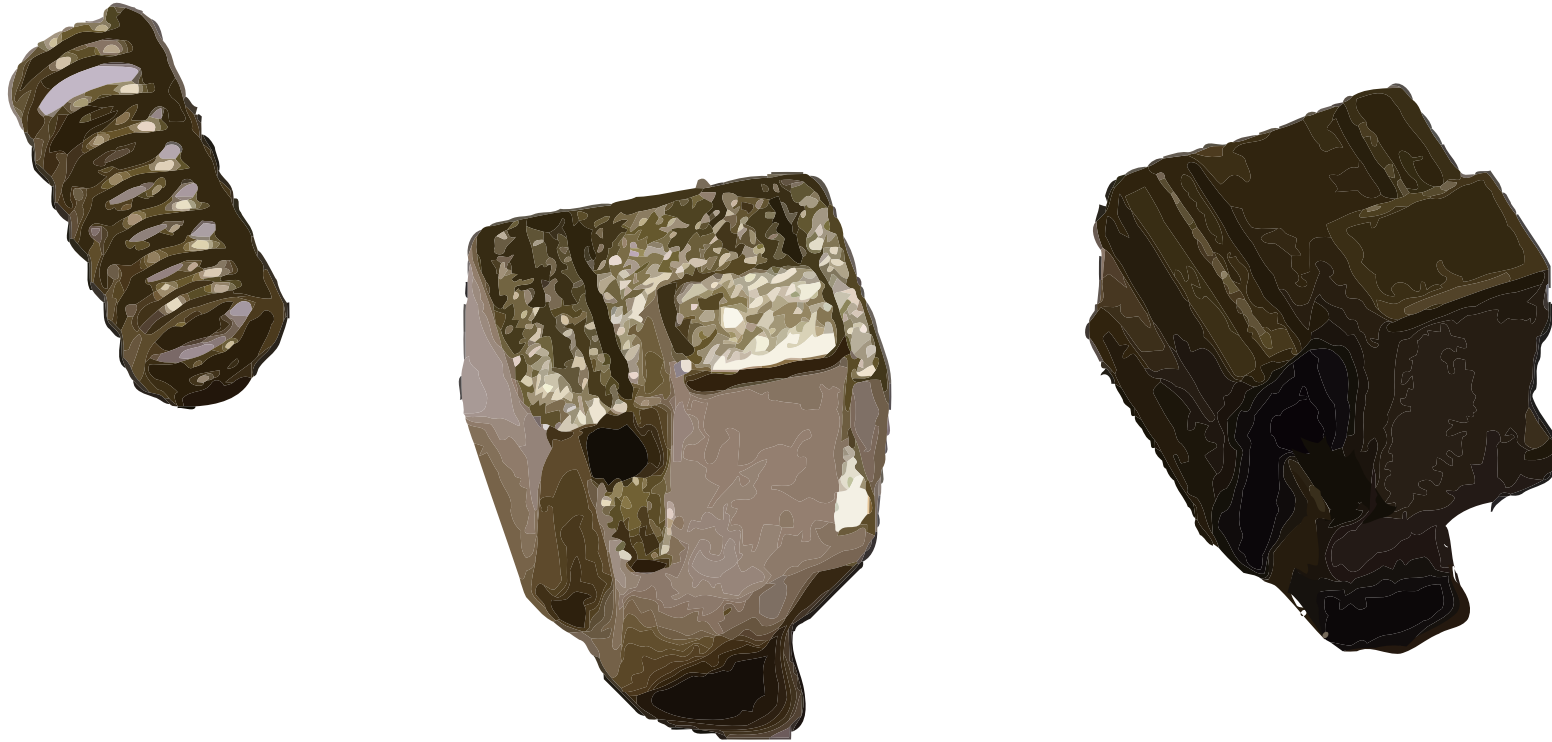


1.5 mm



Step 3:

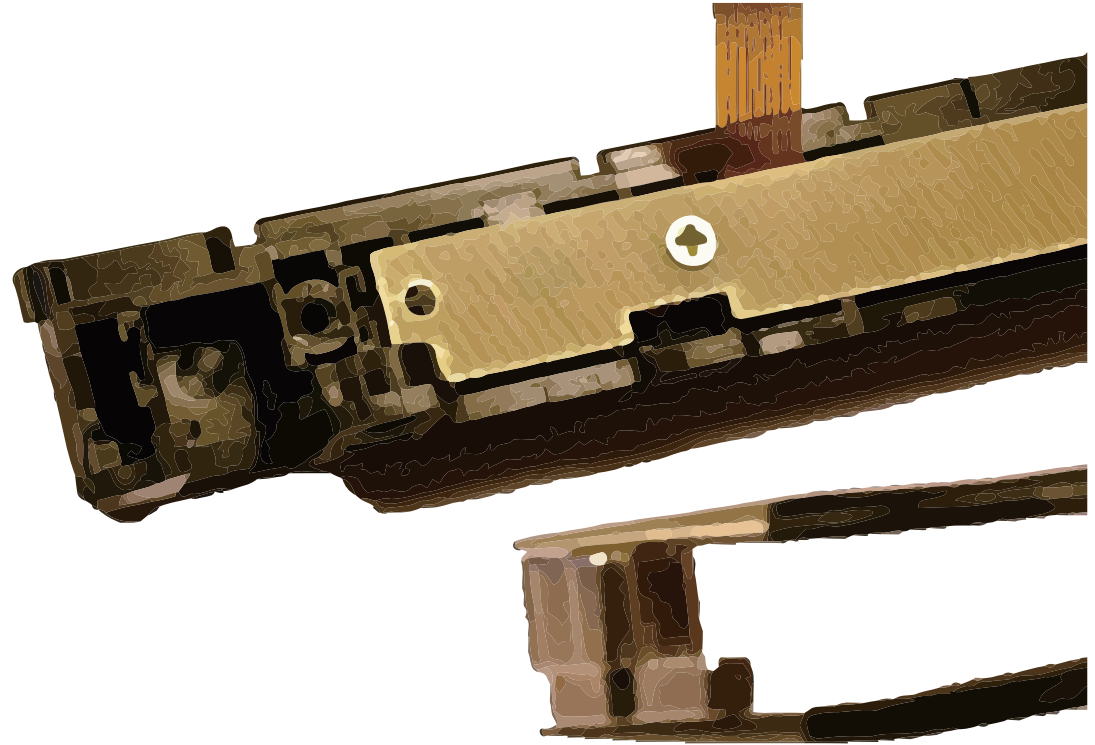
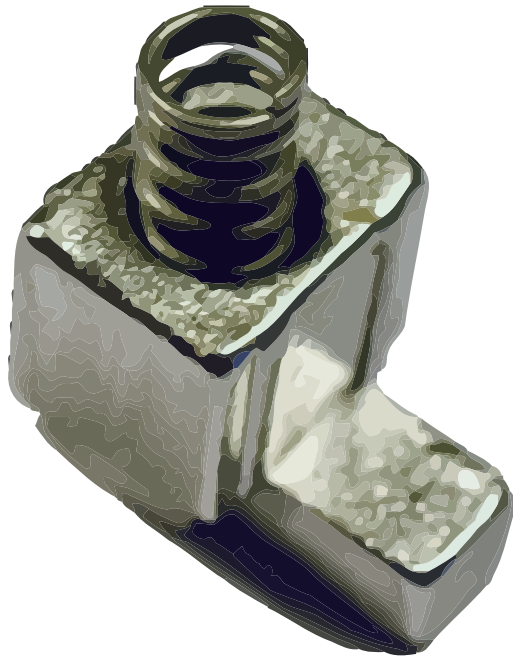
Remove the Phillips screw and gently pry the metal plate from the Joy-Con (a pair of tweezers might help). Be sure to hold the buckle lock in place so the spring does not fly out.



Step 4:

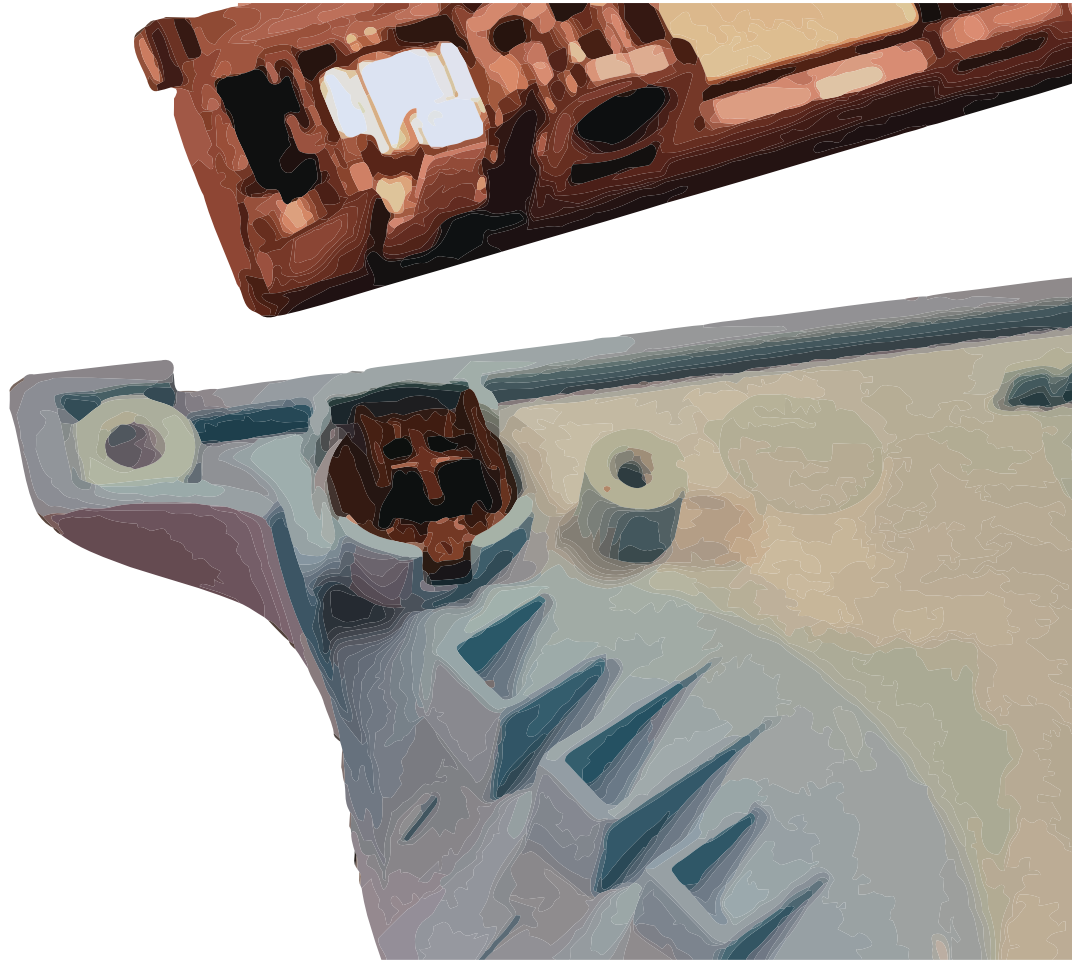
The buckle lock is different for the left and right Joy-Cons. Before you remove the buckle lock, identify the part that you will be replacing it with and make sure it matches the orientation of the original. Pay particular attention to which side is tapered and which side is straight.

Remove the buckle lock, being careful to keep the spring inside from flying out.



Step 5:

Place the spring into the replacement buckle lock. While compressing the spring, slide the buckle lock into the Joy-Con.

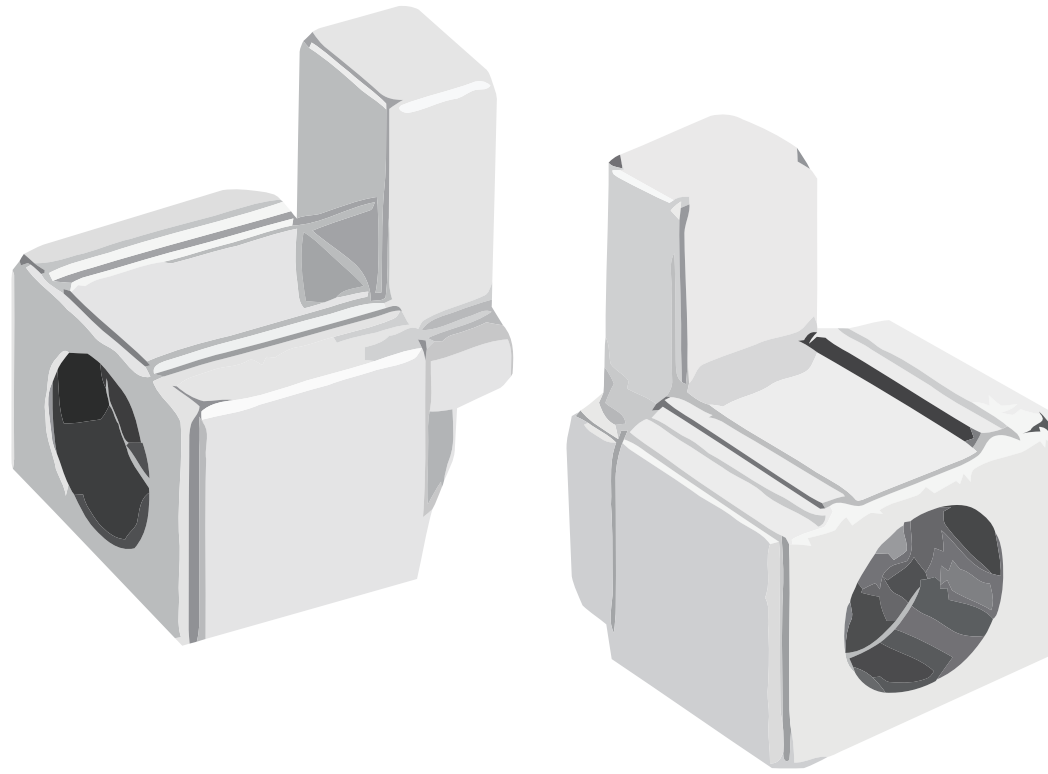


Step 6:

Place the metal cover, making sure not to overtighten the screw.

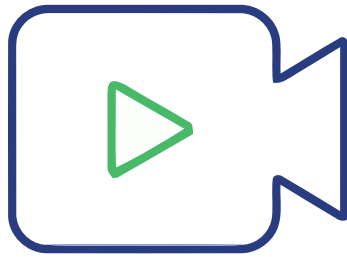
Check that the black plastic latch button is still in place. Reassemble the Joy-Con.

Buckle Lock Replacement Guide



If your Joy-Cons detached too easily from your Nintendo Switch, there's a cheap and easy fix: replace the stock plastic buckle locks with HYZ[®] Alloy ones.

More info



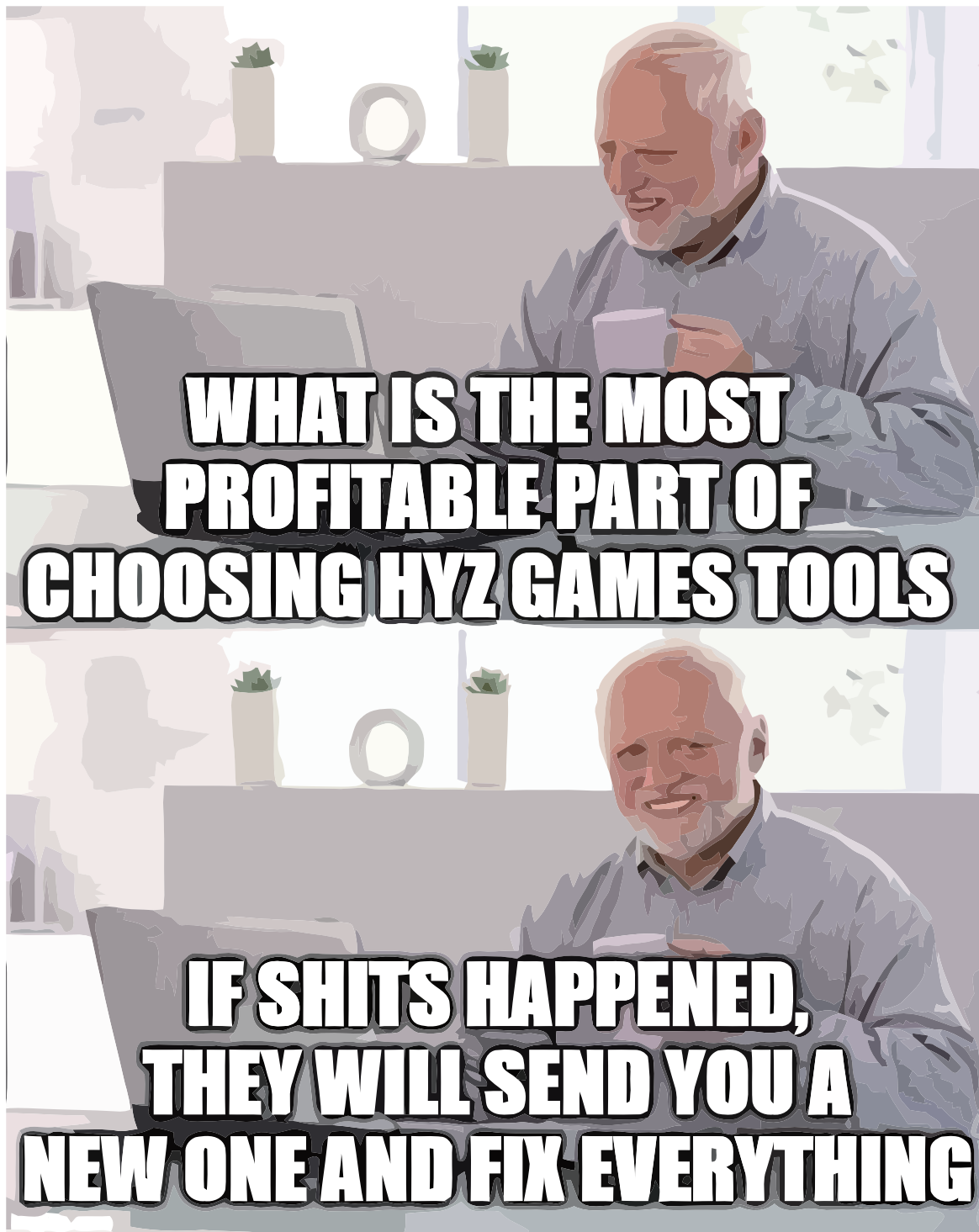
To Watch Video Guide
or get more info, Just
scan the QR Code



Watch video



email us by add this contact or
send support@hyzgames.com



support@hyzgames.com

 m.me/hyzgames